

# CRETELight Concrete Veneer Panel

## CRETELight Classic

CRETELight Classic is a concrete veneer panel designed to achieve the look and feel of real concrete with the convenience of a veneer. The product is ideal for a variety of attractive and durable architectural, acoustical and interior design applications. CRETELight Classic is incredibly lightweight at just 0.46 lbs. per square foot when compared to an actual concrete wall—up to 90% lighter!

CRETELight Classic can be pre-applied to a fire-rated MDF panel or a polypropylene honeycomb carrier plate to make installation simple. Add an edge banding and CRETELight Classic instantly appears to be a solid concrete panel.

**Madrid makes you look good.**

For more information or to order product samples call 562-942-0707.



### Standard Size

49" x 118.9" (custom sizes also available)

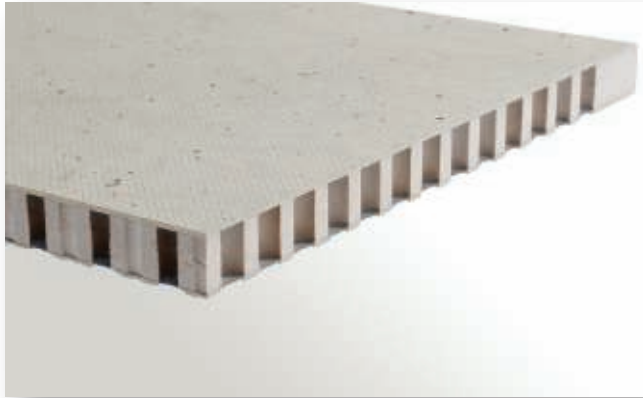
### Backings

**MDF:** A composite material made of HPL-coated MDF for a total material thickness of approximately 19 mm (0.748"). Beveled and square edge banding available. Ideal applications include walls, feature walls and higher traffic areas. Edge banding is available upon request. Mounted with Z-clip fasteners.

**Pur +:** This backing features CRETELight Concrete Veneer Panel on a mineral-based carrier for direct placement and bonding in a 4mm (0.16") overall thickness. Standard MS Polymer adhesives are used for installation.

Cavities, craters, hairline cracks and color fluctuation inherent to concrete should be expected.

## CRETELight Absorb

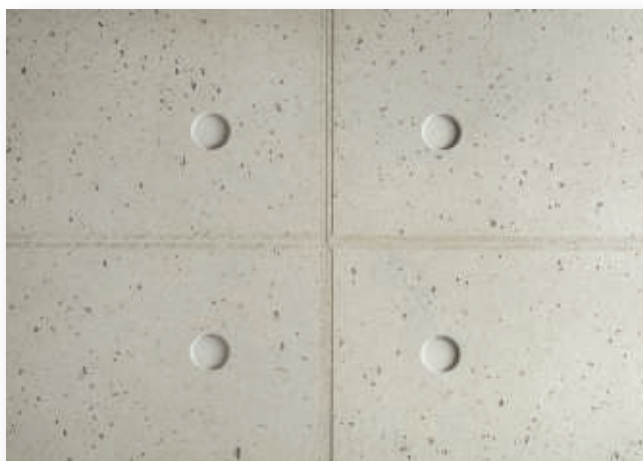


The CRETELight Absorb system offers a microperforated acoustical solution for ambient noise and issues within any space (NRC = 0.90 when mounted with a 2" airspace behind it and mineral wool).

### Standard Size

48" x 118.9" (custom sizes also available)

## CRETELight Formwork



The CRETELight Formwork system allows you to recreate the look of heavy cast concrete formwork and give your space an industrial style. Type 1 has shallow holes of about 1.25 mm and Type 2 has more pronounced holes at 12 mm.

### Standard Size

23.5" x 47.2" (custom sizes also available)

## Color Samples

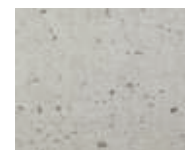
(Edge banding available)



CLASSIC GRAY



CLASSIC WHITE



RETRO



ANTHRACITE  
(Not available for  
CRETELight Absorb)

### About Madrid

Madrid has been crafting unique curved wood products since 1977. We began as an innovator in the skateboard industry and have manufactured wood elements for the furniture trade for over 30 years. Today, Madrid is a leading manufacturer of wood architectural products. In addition to acoustical wood products, Madrid manufactures curved wood custom plywood sheets, wood ceiling tiles and woven wood products. Contact Madrid or your local representative for more information.

Madrid makes you look good.

For more information or to order product samples call 562-942-0707.



www.madridinc.com