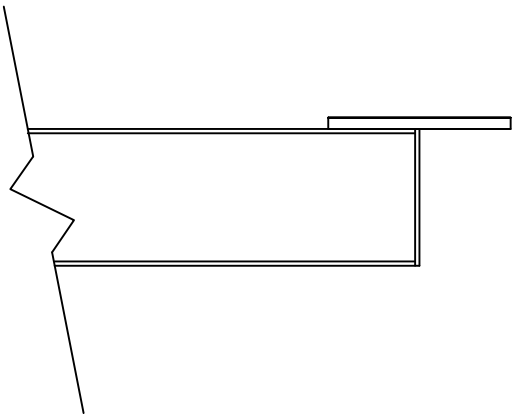
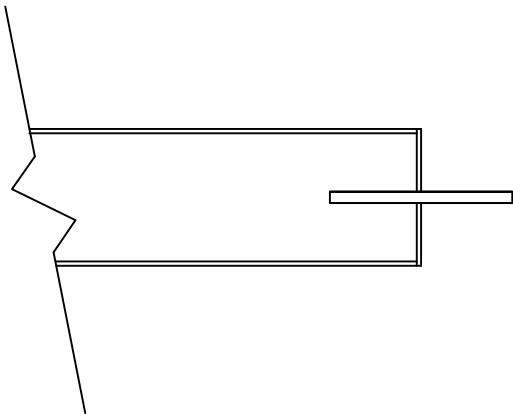
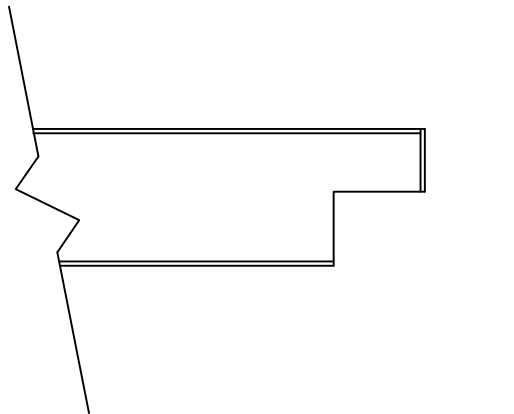
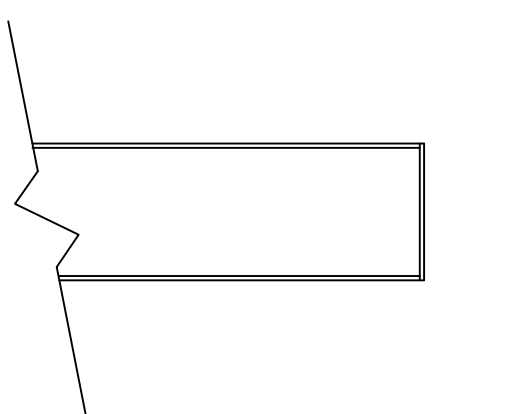
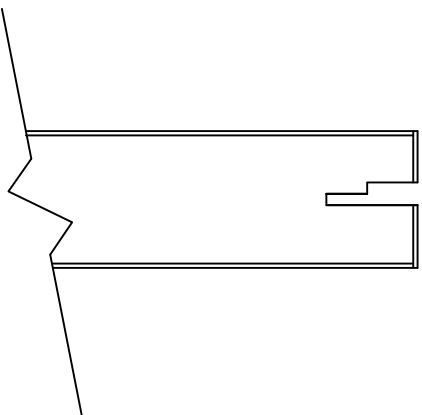
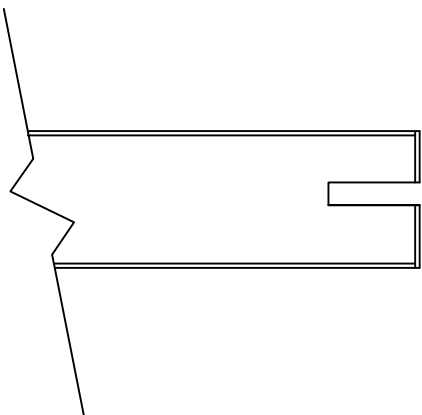
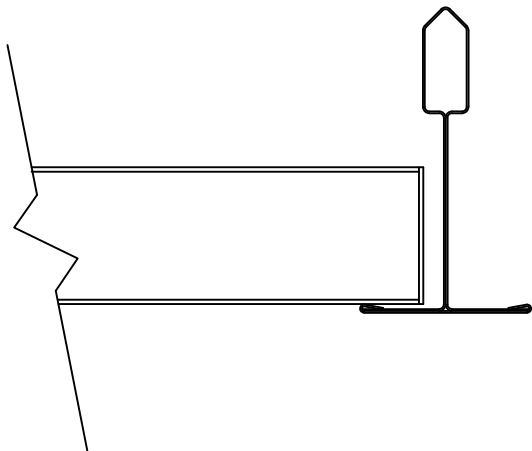


<p>BACK FACE</p>  <p>FRONT FACE</p>	<p>BACK FACE</p>  <p>FRONT FACE</p>	<p>BACK FACE</p>  <p>FRONT FACE</p>	<p>BACK FACE</p>  <p>FRONT FACE</p>
<p>EDGE-BANDED FULL DEPTH TEGULAR AVAILABLE FOR CEILINGS $\frac{15}{16}$" GRID AND $\frac{9}{16}$"</p>	<p>EDGE-BANDED FULL PARTIAL DEPTH TEGULAR AVAILABLE FOR CEILINGS $\frac{15}{16}$" GRID AND $\frac{9}{16}$"</p>	<p>STANDARD TEGULAR AVAILABLE FOR CEILINGS $\frac{15}{16}$" GRID AND $\frac{9}{16}$"</p>	<p>EDGE BANDED AVAILABLE FOR WALL S AND CEILINGS (DIRECT ATTACH, Z-CLIPS, C-HANGERS)</p>
<p>BACK FACE</p>  <p>FRONT FACE</p>	<p>BACK FACE</p>  <p>FRONT FACE</p>	<p>BACK FACE</p>  <p>FRONT FACE</p>	<p>NOTE:</p> <p>1- $\frac{9}{16}$" GRID MAINS TO BE ON MAXIMUM 2'-0" CENTERS</p> <p>2- THESE EDGE CONDITIONS ARE TO APPLY TO $\frac{3}{4}$" NOMINAL THICK PANELS ONLY</p>
<p>EDGE-BANDED SIDE SLOT AVAILABLE FOR CEILINGS $\frac{15}{16}$"</p>	<p>EDGE-BANDED SIDE SPLINE AVAILABLE FOR WALLS: ACCEPTS BLACK OR MATCHING WOOD VENEER SPLINE SPACER</p>	<p>LAY-IN AVAILABLE FOR CEILINGS $\frac{15}{16}$" GRID AND $\frac{9}{16}$" GRID</p>	<p>10088-87</p>



MADRID

7800 INDUSTRY AVENUE
PICO RIVERA, CA 90660
WWW.MADRIDINC.COM

EDGE CONDITION DETAILS

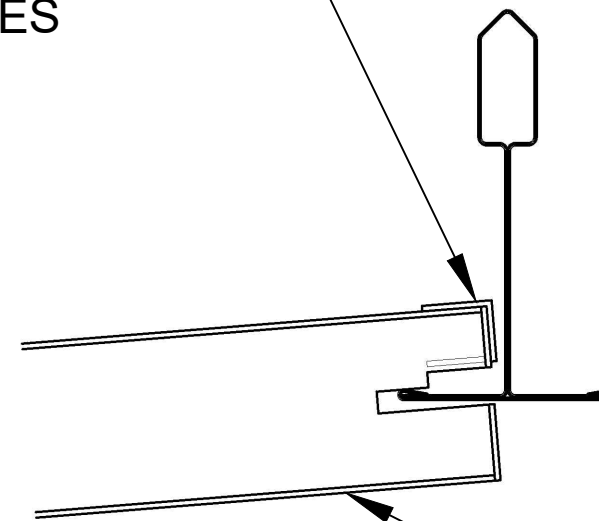
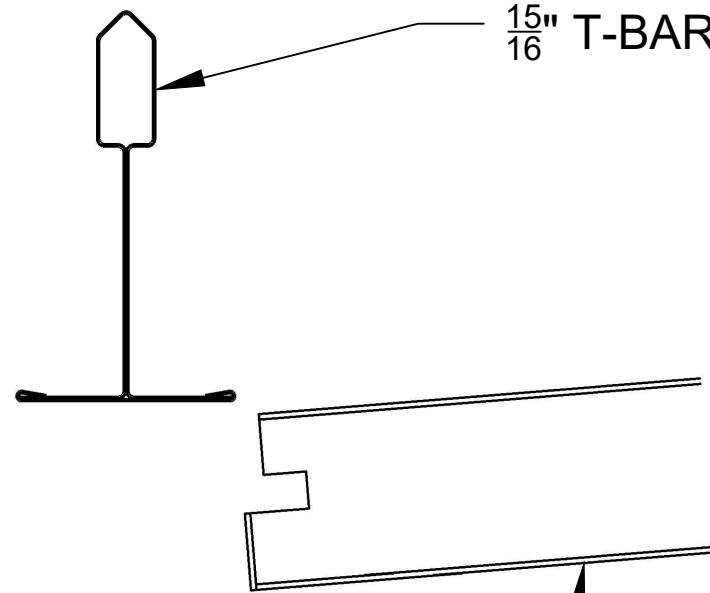
CEILING TILES

1 OF 6

THIS DOCUMENT CONTAINS CONFIDENTIAL AND PROPRIETARY INFORMATION.
ALL RECIPIENTS OF THIS DOCUMENT ARE TO PROTECT THE OWNERS DATA FROM USE BY OR TRANSFER TO NON AUTHORIZED PARTIES BY LEGAL MEANS POSSIBLE COPYRIGHT © 2013 CAD DESIGN AND DRAFTING

GRIDLOCK CLIPS, SPACING PER P.O.

$\frac{15}{16}$ " T-BAR, 2 PLACES



TYP. CEILING PANEL

LIFT THIS SIDE TO ENGAGE SLOT
ONTO T-BAR

**PLACE CEILING PANEL AS SHOWN
COMPRESS GRIDLOCK CLIP (S) AS SHOWN
LIFT LOWER EDGE OF PANEL TO ENGAGE NON CLIP SLOT
AND RELEASE TO SLIDE INTO POSITION**

10088-90



MADRID

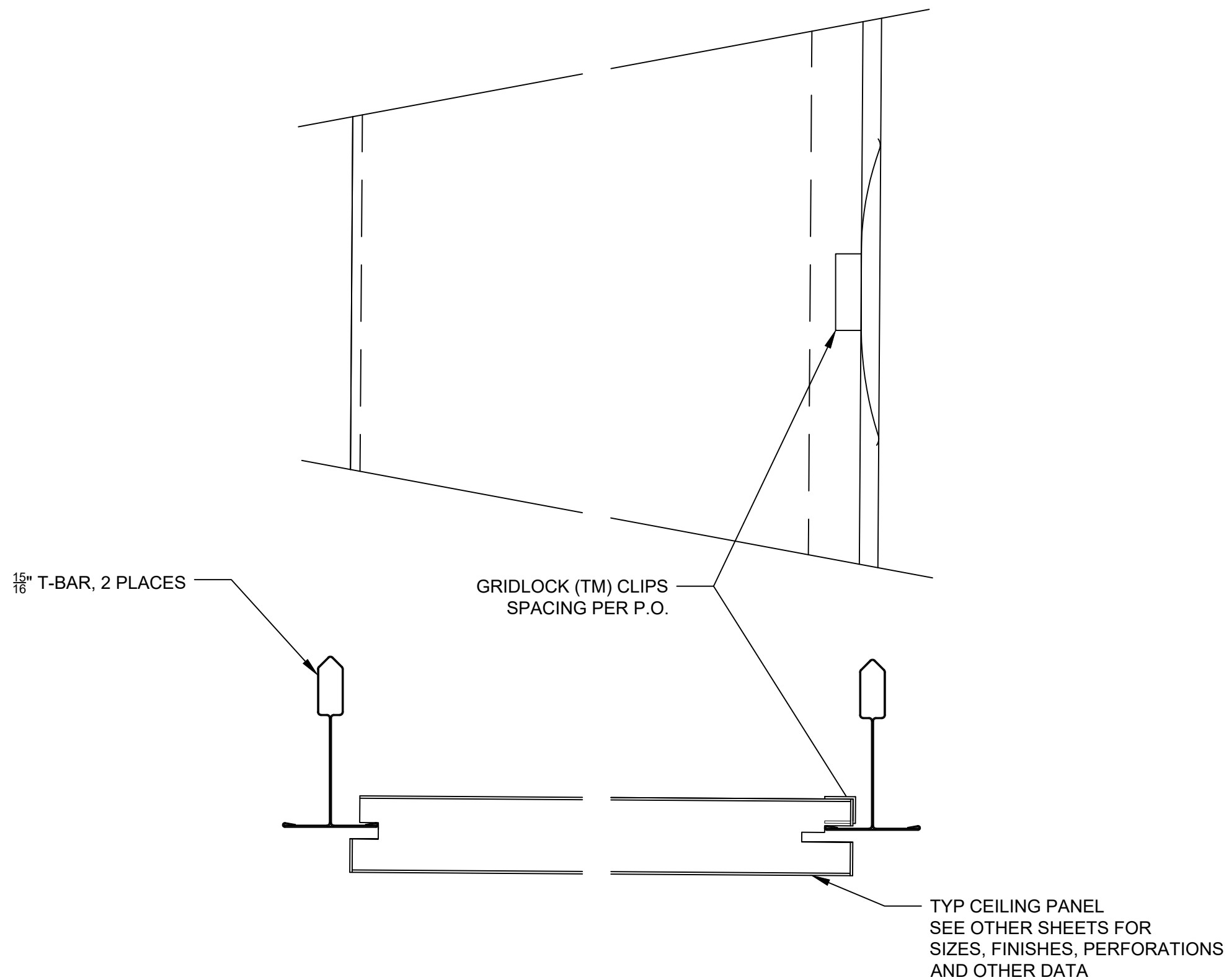
7800 INDUSTRY AVENUE
PICO RIVERA, CA 90660
WWW.MADRIDINC.COM

PANEL INSTALLATION DETAIL

CEILING TILES

2 OF 6

THIS DOCUMENT CONTAINS CONFIDENTIAL AND PROPRIETARY INFORMATION.
ALL RECIPIENTS OF THIS DOCUMENT ARE TO PROTECT THE OWNERS DATA FROM USE BY OR TRANSFER
TO NON AUTHORIZED PARTIES BY LEGAL MEANS POSSIBLE COPYRIGHT © 2013 CAD DESIGN AND DRAFTING



GRIDLOCK (TM) CLIP

10088-91



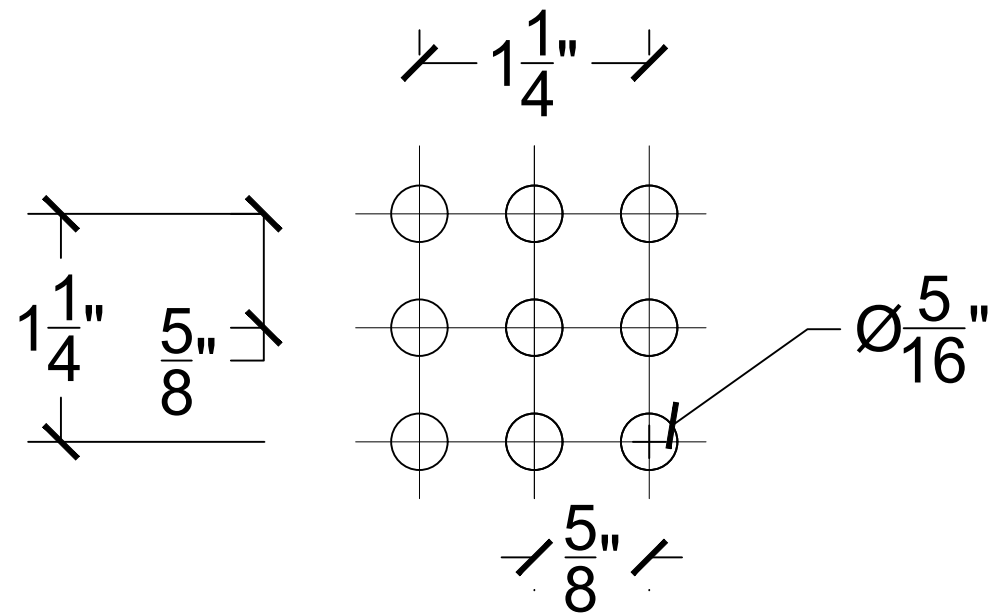
MADRID
 7800 INDUSTRY AVENUE
 PICO RIVERA, CA 90660
 WWW.MADRIDINC.COM

GRIDLOCK (TM) CLIP INSTALLATION

CEILING TILE

3 OF 6

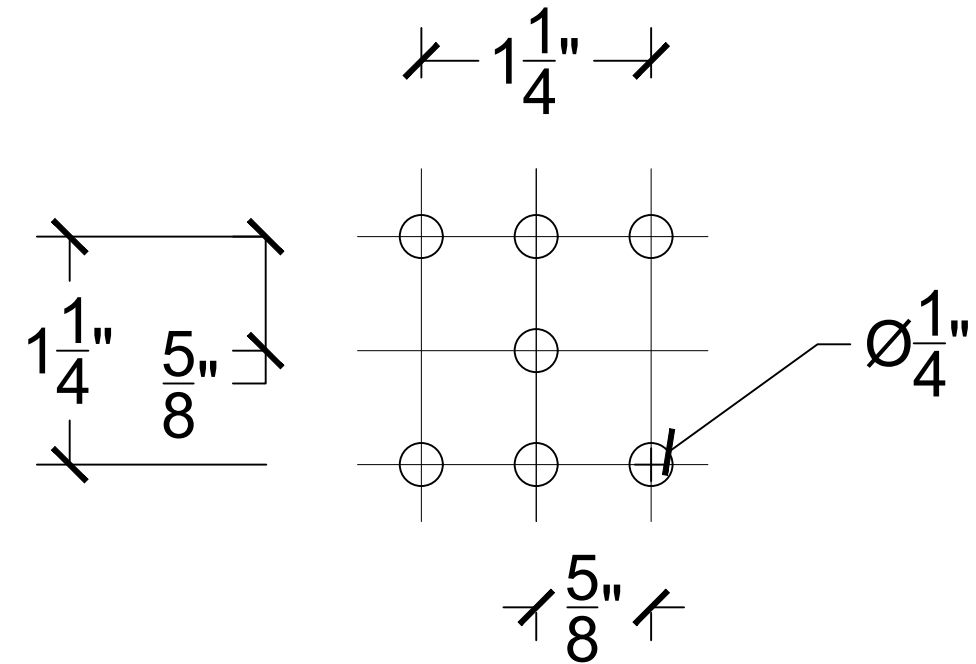
THIS DOCUMENT CONTAINS CONFIDENTIAL AND PROPRIETARY INFORMATION.
 ALL RECIPIENTS OF THIS DOCUMENT ARE TO PROTECT THE OWNERS DATA FROM USE BY OR TRANSFER
 TO NON AUTHORIZED PARTIES BY LEGAL MEANS POSSIBLE COPYRIGHT © 2013 CAD DESIGN AND DRAFTING



PATTERN 1003 - XXX

TYPE: ROUND STRAIGHT
 HOLE SIZE : SEE TABLE, $\frac{5}{16}$ " SHOWN
 PERCENT OPEN AREA: SEE TABLE

<u>PERCENT OPEN AREA</u>	<u>PART DASH NUMBERS</u>
003 - - 11.0	003 - - 6MM (0.236) DIA.
004 - - 12.4	004 - - 0.250 DIA.
005 - - 19.4	005 - - 0.313 DIA.
006 - - 27.7	006 - - 0.375 DIA.
007 - - 15.6	007 - - 7MM (0.281) DIA
008 - - 38.0	008 - - 0.438 DIA
009 - - 19.9	009 - - 8 MM (0318) DIA



PATTERN 1003 - XXX

TYPE: ROUND DIAGONAL
 HOLE SIZE : SEE TABLE, 6 (0.236) MM SHOWN
 PERCENT OPEN AREA: SEE TABLE

<u>PERCENT OPEN AREA</u>	<u>PART DASH NUMBERS</u>
003 - - 5.5	003 - - 6MM (0.236) DIA.
004 - - 6.2	004 - - 0.250 DIA.
005 - - 9.7	005 - - 0.313 DIA.
006 - - 13.8	006 - - 0.375 DIA.
007 - - 7.8	007 - - 7MM (0.281) DIA
008 - - 18.9	008 - - 0.438 DIA
009 - - 10.0	009 - - 8 MM (0318) DIA

10088-82



MADRID

7800 INDUSTRY AVENUE
 PICO RIVERA, CA 90660
 WWW.MADRIDINC.COM

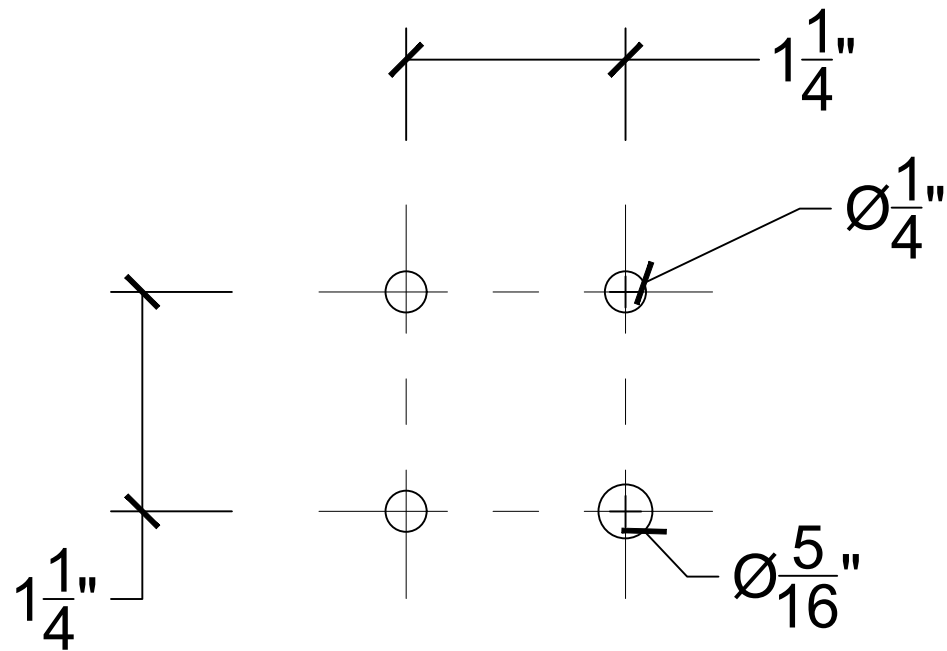
STANDARD PERFORATION DETAILS

CEILING TILES

4 OF 6

10088-83

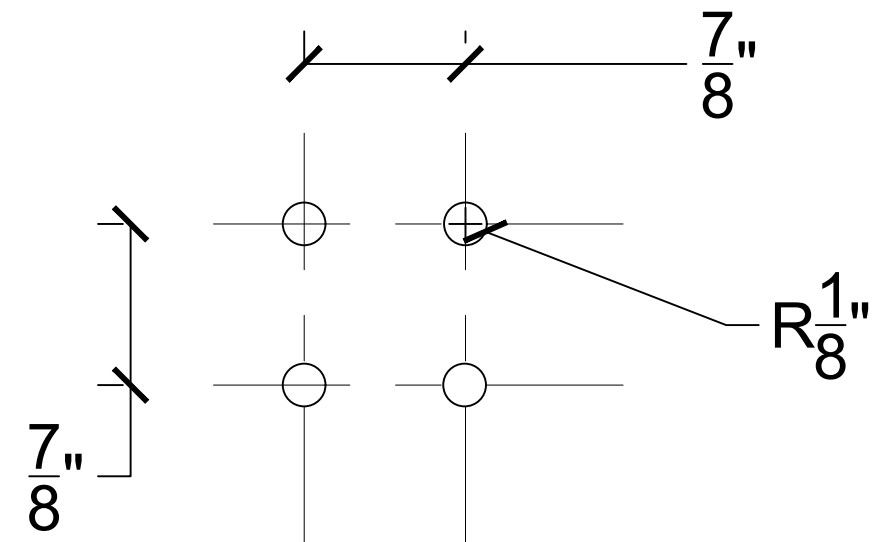
THIS DOCUMENT CONTAINS CONFIDENTIAL AND PROPRIETARY INFORMATION.
 ALL RECIPIENTS OF THIS DOCUMENT ARE TO PROTECT THE OWNERS DATA FROM USE BY OR TRANSFER
 TO NON AUTHORIZED PARTIES BY LEGAL MEANS POSSIBLE COPYRIGHT © 2013 CAD DESIGN AND DRAFTING



PATTERN 1003 - XXX

TYPE: ROUND STRAIGHT
 HOLE SIZE : SEE TABLE, 6 MM SHOWN
 PERCENT OPEN AREA: SEE TABLE

<u>PERCENT OPEN AREA</u>	<u>PART DASH NUMBERS</u>
003 - - 2.8	003 - - 6MM (0.236) DIA.
004 - - 3.1	004 - - 0.250 DIA.
005 - - 4.9	005 - - 0.313 DIA.
006 - - 6.9	006 - - 0.375 DIA.
007 - - 3.9	007 - - 7MM (0.281) DIA
008 - - 9.5	008 - - 0.438 DIA
009 - - 5.0	009 - - 8 MM (0318) DIA



PATTERN 1003 - XXX

TYPE: ROUND STRAIGHT
 HOLE SIZE : SEE TABLE, 6 MM SHOWN
 PERCENT OPEN AREA: SEE TABLE

<u>PERCENT OPEN AREA</u>	<u>PART DASH NUMBERS</u>
003 - - 5.5	003 - - 6MM (0.236) DIA.
004 - - 6.2	004 - - 0.250 DIA.
005 - - 9.7	005 - - 0.313 DIA.
006 - - 13.8	006 - - 0.375 DIA.
007 - - 7.8	007 - - 7MM (0.281) DIA
008 - - 31.4	008 - - 0.438 DIA
009 - - 10.0	009 - - 8 MM (0318) DIA



MADRID

7800 INDUSTRY AVENUE
 PICO RIVERA, CA 90660
 WWW.MADRIDINC.COM

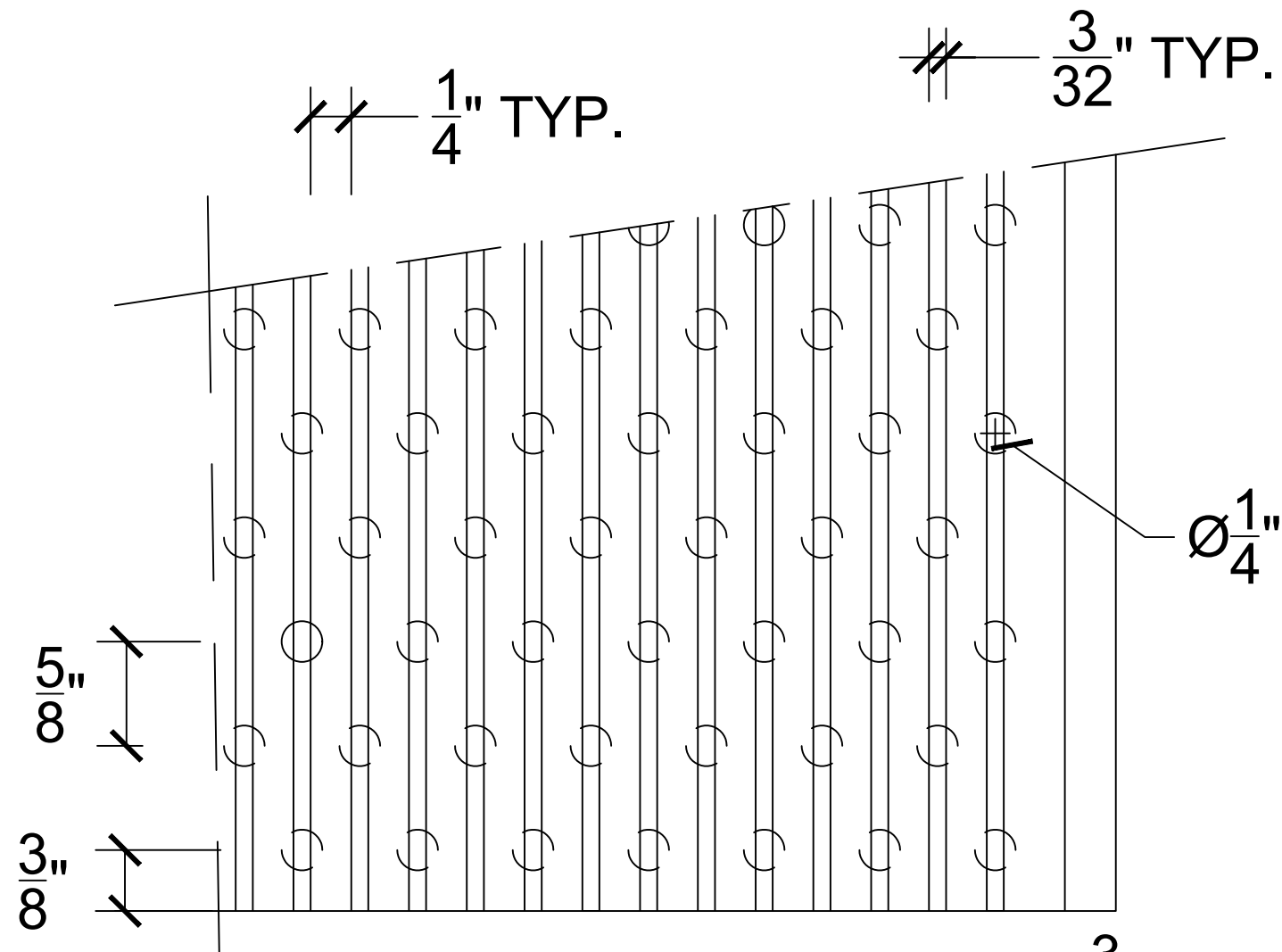
STANDARD PERFORATION DETAILS

CEILING TILES

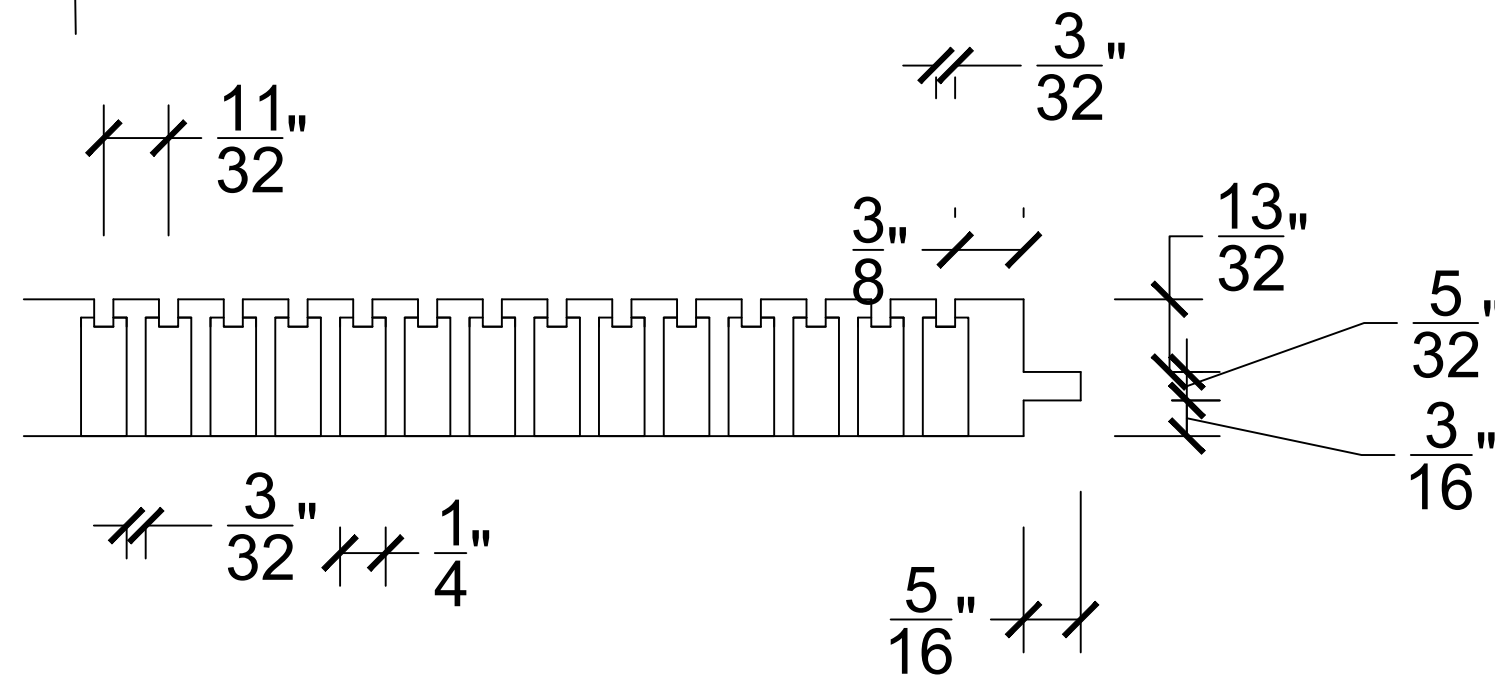
5 OF 6

THIS DOCUMENT CONTAINS CONFIDENTIAL AND PROPRIETARY INFORMATION.
 ALL RECIPIENTS OF THIS DOCUMENT ARE TO PROTECT THE OWNERS DATA FROM USE BY OR TRANSFER
 TO NON AUTHORIZED PARTIES BY LEGAL MEANS POSSIBLE COPYRIGHT © 2013 CAD DESIGN AND DRAFTING

PLAN VIEW



SIDE VIEW



10088-86



MADRID

7800 INDUSTRY AVENUE
PICO RIVERA, CA 90660
WWW.MADRIDINC.COM

STANDARD PERFORATION DETAILS

CEILING TILES

6 OF 6

THIS DOCUMENT CONTAINS CONFIDENTIAL AND PROPRIETARY INFORMATION.
ALL RECIPIENTS OF THIS DOCUMENT ARE TO PROTECT THE OWNERS DATA FROM USE BY OR TRANSFER
TO NON AUTHORIZED PARTIES BY LEGAL MEANS POSSIBLE COPYRIGHT © 2013 CAD DESIGN AND DRAFTING